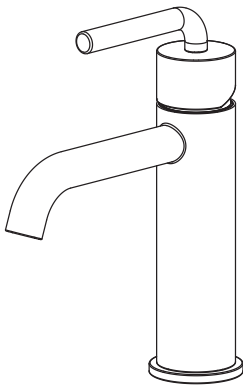


# INSTALLATION MANUAL

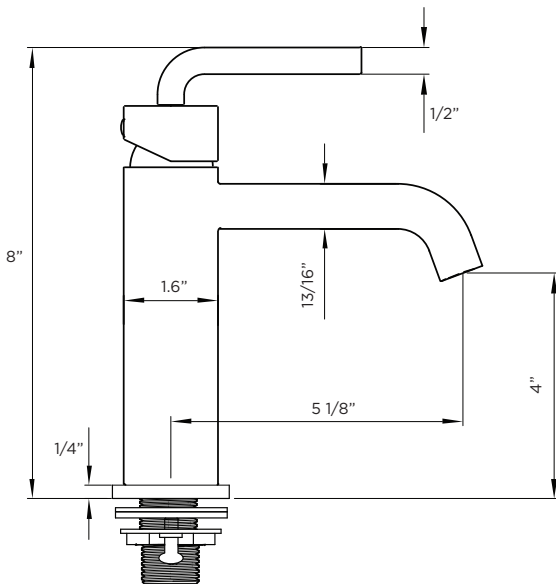
## SINGLE HANDLE BATHROOM FAUCET

---



**MODEL# FAM6**

## SPECIFICATIONS TECHNICAL DATA



## TOOLS REQUIRED



Screw Driver



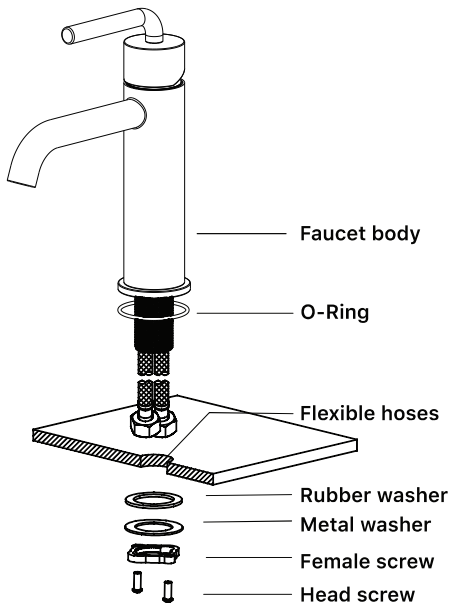
Hexagon Wrench



Pipe Tape

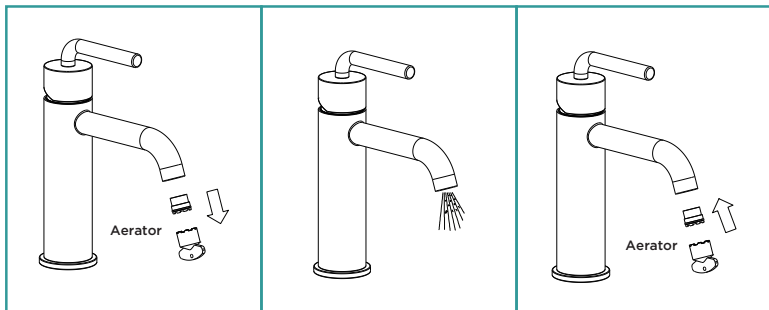


Adjustable Wrench



## BEFORE INSTALLATION

- We recommend that this product is installed by qualified professional plumber.
- Please flush the water system to ensure that no impurities can enter the taps.
- Shut off main water supply before installation.
- Please read these instructions carefully and keep it for future reference.



1. Screw the flexible hoses into the mixer body, and fully hand tighten.
2. Pass the tail of flexible pipes through the hole on the basin from above, and place the mixer in position on the basin, to see if any alteration to the existing supply pipe work is necessary alterations to the pipe work.
3. Tighten the rubber washer, the brass washer & the female screw from the under-side of the counter.
4. Check that the mixer body is correctly positioned, fully tighten the female screw.
5. Connect the water supply pipes to the tail of flexible hoses with the hot water and cold water.