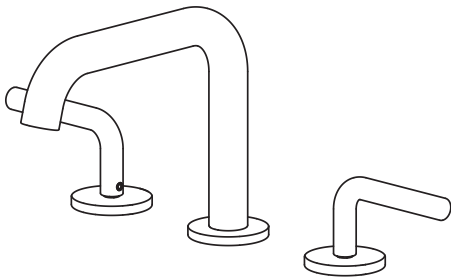


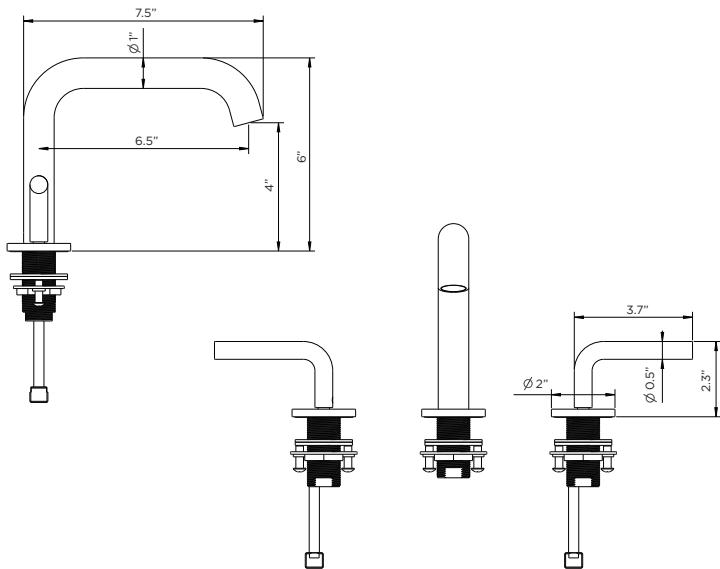
INSTALLATION MANUAL

BATHROOM FAUCET



MODEL# FAS6

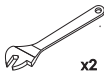
SPECIFICATIONS / TECHNICAL DATA



TOOLS REQUIRED FOR INSTALLATION



Phillips screwdriver



x2

Adjustable wrench



Bucket

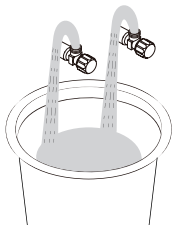


Silicone sealant



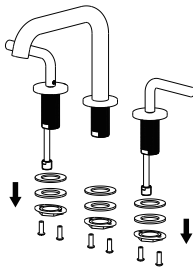
Pipe tape

1



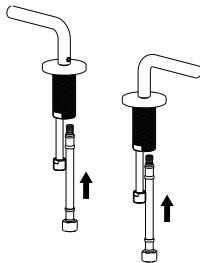
Shut off water suppliers.
Remove the old faucet, clean the
mounting surface.
Note: For first time install, flush the
pipes first by open the angel valve
to run 60s.

2



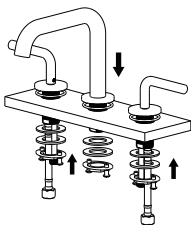
Remove the mounting hardware
from the mounting pipe.

3



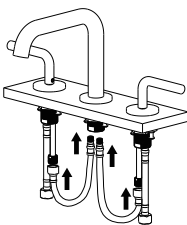
Connect the water supply lines to
faucet.

4



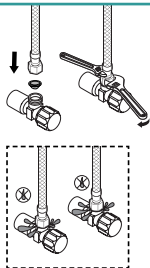
From below the sink, Slide rubber washer, metal washer and mounting bracket onto the thread shank, Then tighten the mounting nuts with phillips screwdriver until snug.

5



Position the flexible hose as shown and fix it to the faucet.

6



Connect and tighten the supply hoses by using two adjustable wrenches (avoid twisting or kinking). Turn on the angle valve and check for leaks.
Note: Do not remove the net filter that attached into the connecting end!

CLEANING INSTRUCTIONS

Quality, technological processes and materials are the features that determine the high standards of our accessories. However, to avoid surface alternations, it is necessary to follow a few guidelines.

Clean all finishes exclusively with soap and water, and dry with a soft cloth.

Do not use coarse cloths, abrasive products, acids, ammonia products, caustic substances, bleach or solvents.

In case of contact with these substances, rinse surfaces immediately and wipe dry.

Remember that even fumes can damage metal. Wash accessories next to the toilet bowl at regular intervals to avoid corrosion.