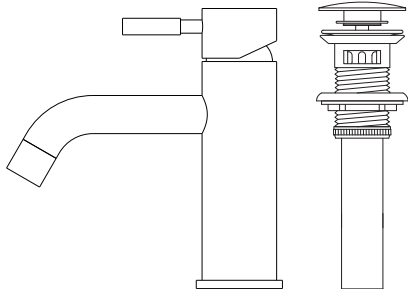


INSTALLTION MANUAL

FAUCET & POP UP DRAIN



MODEL# FAD2



⚠️ READ ALL INSTRUCTIONS BEFORE UNPACKING THE PRODUCT

Instructions that, if ignored, could result in death or serious injury caused by incorrect handling or installation of the product. These instructions must be observed for safe installation.

⚠️ INSTALLATION OF THIS PRODUCT BY AN INEXPERIENCED INSTALLER MAY RESULT IN PERSONAL INJURY OR DEATH!

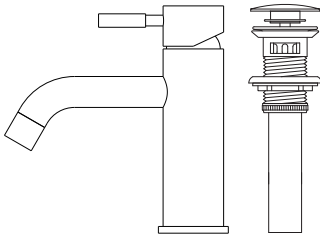
We reserves the right to change, update, modify, alter, redesign this manual/product or its policies without prior notice!

It is your responsibility to visit the website to download or contact customer service for the most updated version of the installation instructions.

We shall not be liable for any injuries or property damages in connection with this product during installation or use of this product!

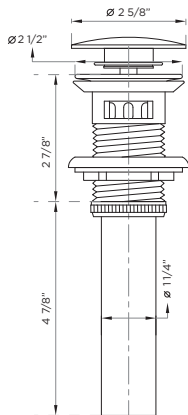
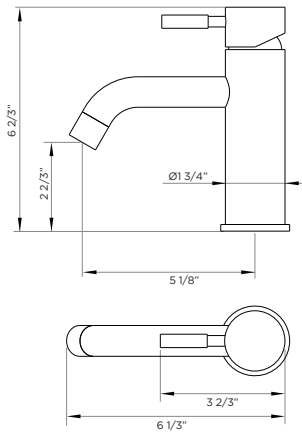
- Limited warranty is void on any commercial installation.
- We are not responsible for local code compliance for this product.
- Building and plumbing codes may vary from state-to-state in accordance to your location.
- We are not responsible for providing any compliance certifications.
- We are not responsible to provide any type of certifications for this product.
- Under no circumstances we shall not be liable for any and all incidental damages sustained in connection with this product Neither manufacture, nor distributor, nor retailer is responsible for water damage or flood caused due to use of this product.
- Under no circumstances We shall not be liable for any and all fees, cost of installation/re-installation/removal, subsequent damage or transportation in case of the product defect.

FAUCET & POP-UP DRAIN





SPECIFICATIONS/TECHNICAL DATA

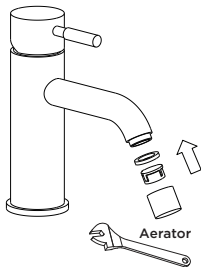
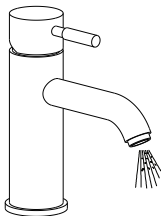
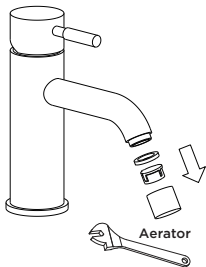




FAUCET INSTALLATION

BEFORE INSTALLATION

- We recommend that this product is installed by qualified professional plumber / contractor.
- Please check this product immediately to ensure that it has not been damaged and is complete. Before installation, please make sure this product is the correct model and you have all the parts required for installation and using.
- Please flush the water system to ensure that no metal swarf, solder and other impurities can enter the taps.
- Turn off water supply before commencing work, this should be done at the isolating valves of inlet feeds if fitted or main stopcock.
- Please read these instructions carefully and keep it for future reference.





CLEANING

- Before use: Unscrew the Aerator and allow the water to run freely for 5 minutes. Then Screw the filter back in place.
- Periodically: Unscrew the Aerator and remove. Rinse it with running water until any loose debris is cleared. Then replace the Aerator and tighten.

FAUCET INSTALLATION PROCEDURE

Shut off main water supply before installation.

REQUIRED TOOLS



Screw driver



Adjustable wrench

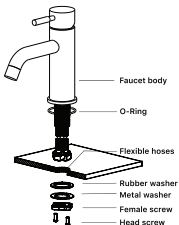


S2.5 Allen key



Teflon Tape

1. Screw the flexible hoses into the mixer body, and fully hand tighten.
2. Pass the tail of flexible pipes through the hole on the basin from above, and place the mixer in position on the basin, to see if any alteration to the existing supply pipe work is necessary alterations to the pipe work.
3. Tighten the rubber washer, the brass washer & the female screw from the under-side of the counter.
4. Check that the mixer body is correctly positioned, fully tighten the female screw.
5. Connect the water supply pipes to the tail of flexible hoses with the hot water and cold water.





PUP UP DRAIN INSTALLATION

FOR BEST RESULTS:

- Prevent the buildup of mineralscale and / or soap residue by cleaning your products needed. Select a cleaning agent specifically intended for the type of product.
- Do not use these types of cleaners as they will cause damage to your product: Any cleaning agent containing hydrochloric acid or acetic acid; Abrasive cleaning powders, pads or brushes; steam Cleaners.
- Do not spray cleaners directly onto the products as drops could enter openings and gaps and cause damage. When using spray cleaners, spray the cleaner onto a soft cloth or sponge. Always rinse your products thoroughly with clear water and polish dry with a soft cloth after cleaning.

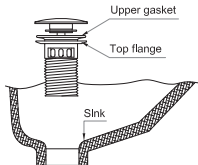
IMPORTANT:

- Residue from soaps and shampoos can cause damage, Rinse the product with clean water after each use.
- Damage to the product caused by improper care or the use of improper cleaning agent is not covered by the warranty.



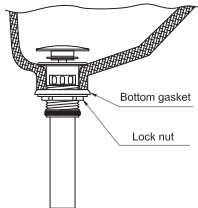
1

- Clean the contact surface before installation.
- This item is not supposed to be twisted with any wrench.
- Do not use polishing powder or other detergent with powders to clean the pop-up drain.



2

- A. Align the upper gasket onto the top flange.
- B. Tape some thread seal tape onto the inter face of the tailpiece, and connect it to the top flange.
- C. Insert the pop-up drain body up through the bottom of the sink.
- D. Align the bottom gasket as well as the lock nut onto the tailpiece.
- E. Place the drain body at the proper position, and then tighten up the lock nut.





206 WEMBLY ROAD • NEW WINDSOR, NY 12553
P: 718.602.6060 F: 718.963.2082 E: INFO@FINEFIXTURES.COM
TOLL FREE: 1.877.BFIXTURES
FINEFIXTURES.COM

